



Agri Drain

C O R P O R A T I O N

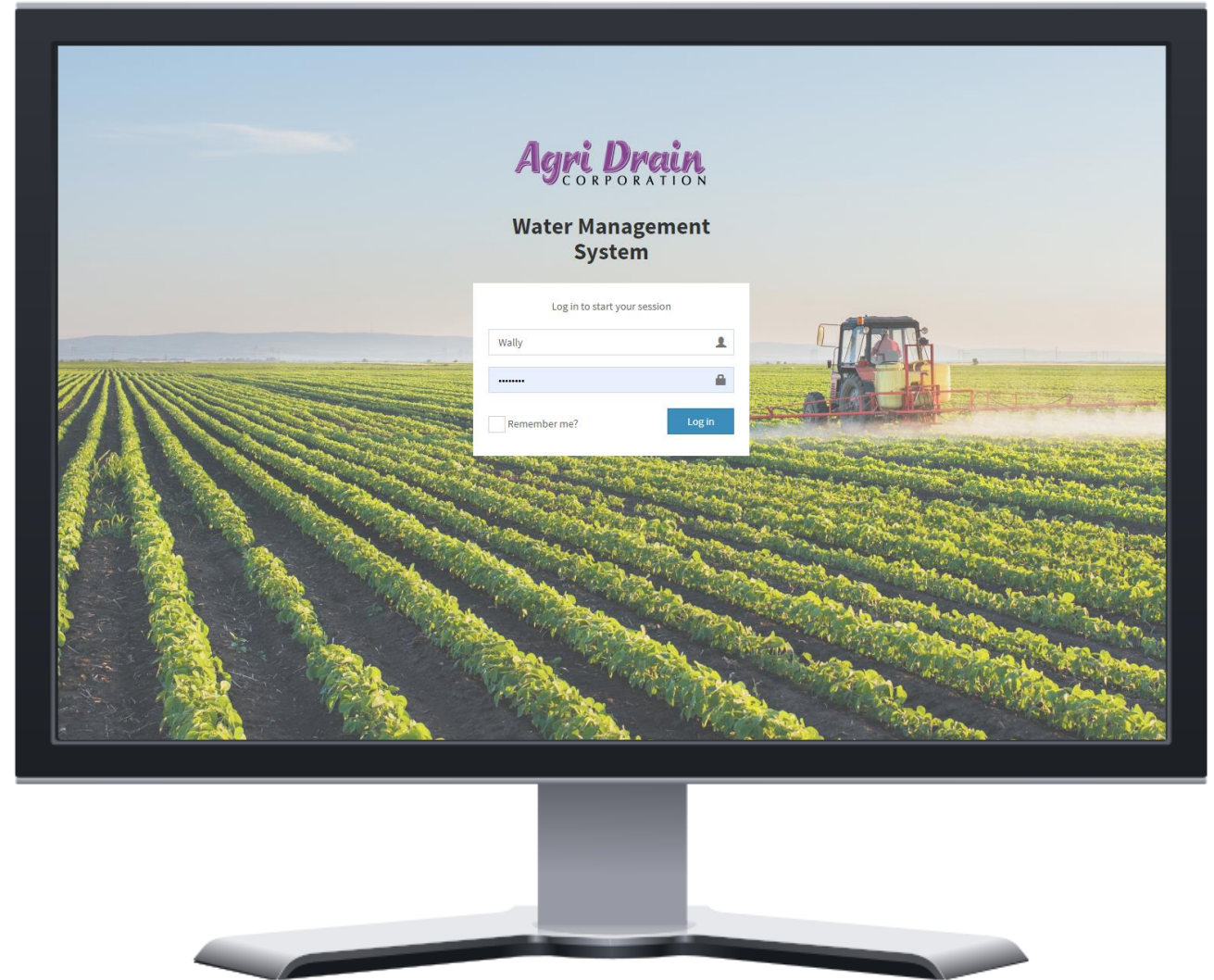
Technical service provided by

ESE
Ecosystem Services Exchange
Valuing Conservation

Smart Drainage System®

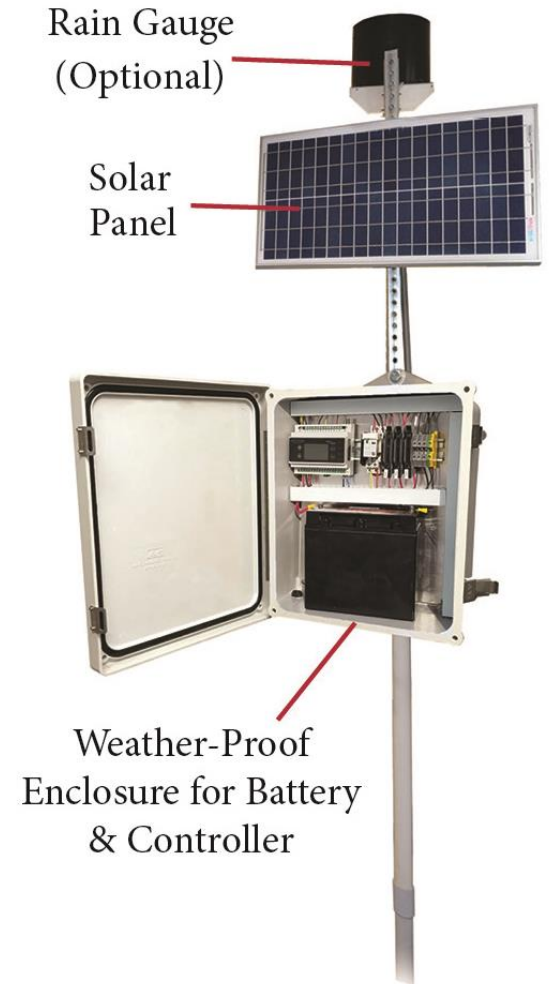
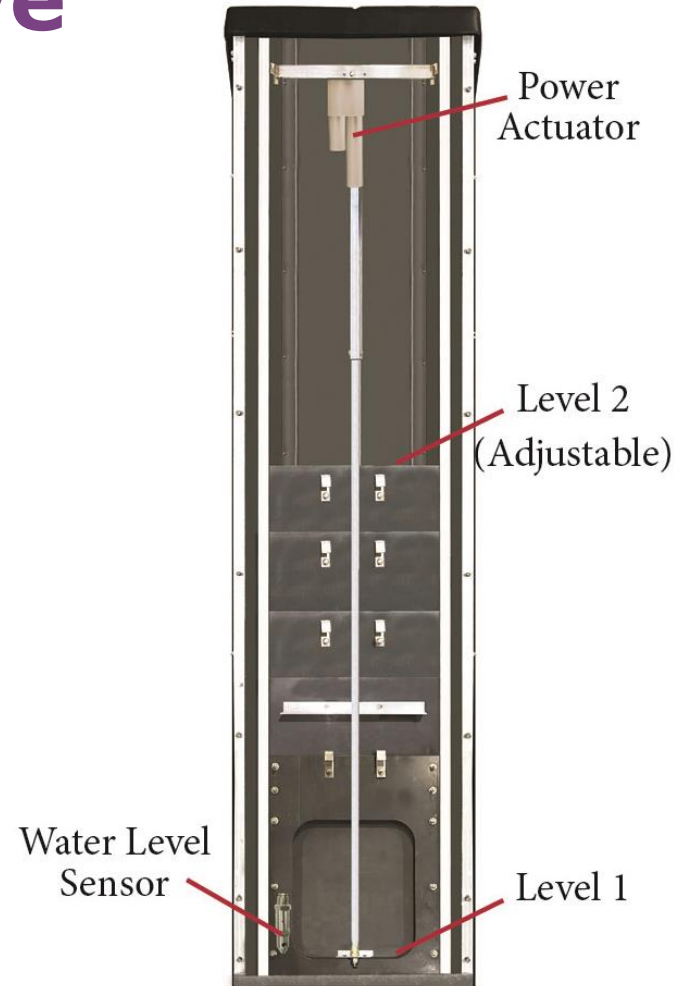
Smart Drainage Site

- Program, monitor, and record site conditions from your cell phone, laptop, or tablet.
- Send commands to open or close the valve within your structure.
- Manage structure settings and set points.
- View valve status, water level, flow rates, and battery level.



Multi-Level Automated Remote Control Valve

- Open & close on-demand or automatically based on desired set points.
- Operates in drainage water management or irrigation mode.
- 365 water level set points.
- 4 water level timers.
- 4 drain duration timers.
- Pipe sizes up to 12" diameter.



MENU

Dashboard <

Charts

Map

User Profile

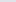
Edit

Change Password

Username	wally
First Name	Wally
Last Name	Rutzen
Email	rutzen@rutzen.org
Phone Number	515-555-1212
Company	006 Test Company
Role	Producer
Read Only	False
Date Joined	12/20/2019 3:24:55 PM
Last Login	12/26/2019 11:07:05 AM

Add Set Point Schedule

**Start Date**

	MM-DD-YYYY
---	------------

Mode

Irrigation & Drainage

Set Point

Set Point Direction

Below Field Elevation

Drainage Water Management (Above Set Point Level Table):

Level	Height Above Set Point(inches)	Wait Timer (hours)	Duration (hours)
1	inches	hours	hours
2	inches	hours	hours
3	inches	hours	hours
4	inches	hours	hours

Irrigation & Drainage (Below Set Point Level Table):

Level	Height Below Set Point (inches)	Wait Timer (hours)
1	inches	hours
2	inches	hours
3	inches	hours
4	inches	hours

Cancel

Submit

MENU

Dashboard

Charts

Map

Administrators

Dashboards - Lower Field, RSG1548, SN#011

Manual

System

CLOSED

Drainage Valve

Drainage Water Management

Mode

CLOSED

Irrigation Valve

13.13 V

Battery Power

13.03 V

Solar Power

OFF

Irrigation Pump

45.14°F

Enclosure Temperature

Current Water Level

24.00 in

12.00 in

FE

-12.00 in

-24.00 in

-36.00 in

-48.00 in

-60.00 in

Site Information

Edit

Name

Lower Field, RSG1548, SN#011

Stop Log 1 Distance

0"

Field Elevation

906' Above Sea Level

Bottom of Structure Elevation

900.5' Above Sea Level

Set Point

4" ↓

Drainage Water Management (Above Set Point Level Table):

Level Number	Level Height	Wait Timer	Duration	Timer Status
1	4"	8 hours	3 hours	X
2	8"	6 hours	3 hours	X
3	12"	4 hours	3 hours	X
4	16"	0 hours	3 hours	X

Set Point Schedule

Add

1/4/2021

Set Point: 4 in ↓

Water Level Data - Past 24 Hours

Level 1

Set Point

Field Elevation: 906 ft

Bottom Structure Elevation: 900.5 ft

96 in

84 in

72 in

60 in

48 in

36 in

24 in

12 in

FE

-12 in

-24 in

-36 in

-48 in

-60 in

1/7 5:00 PM

1/7 7:00 PM

1/7 9:00 PM

1/7 11:00 PM

1/8 1:00 AM

1/8 3:00 AM

1/8 5:00 AM

1/8 7:00 AM

1/8 9:00 AM

1/8 11:00 AM

1/8 1:00 PM

1/8 3:00 PM

1/8 5:00 PM

Charts

Charts

Current Values Level 1: 35.79 in Field Elevation: 906 ft Bottom of structure at: 900.5 ft

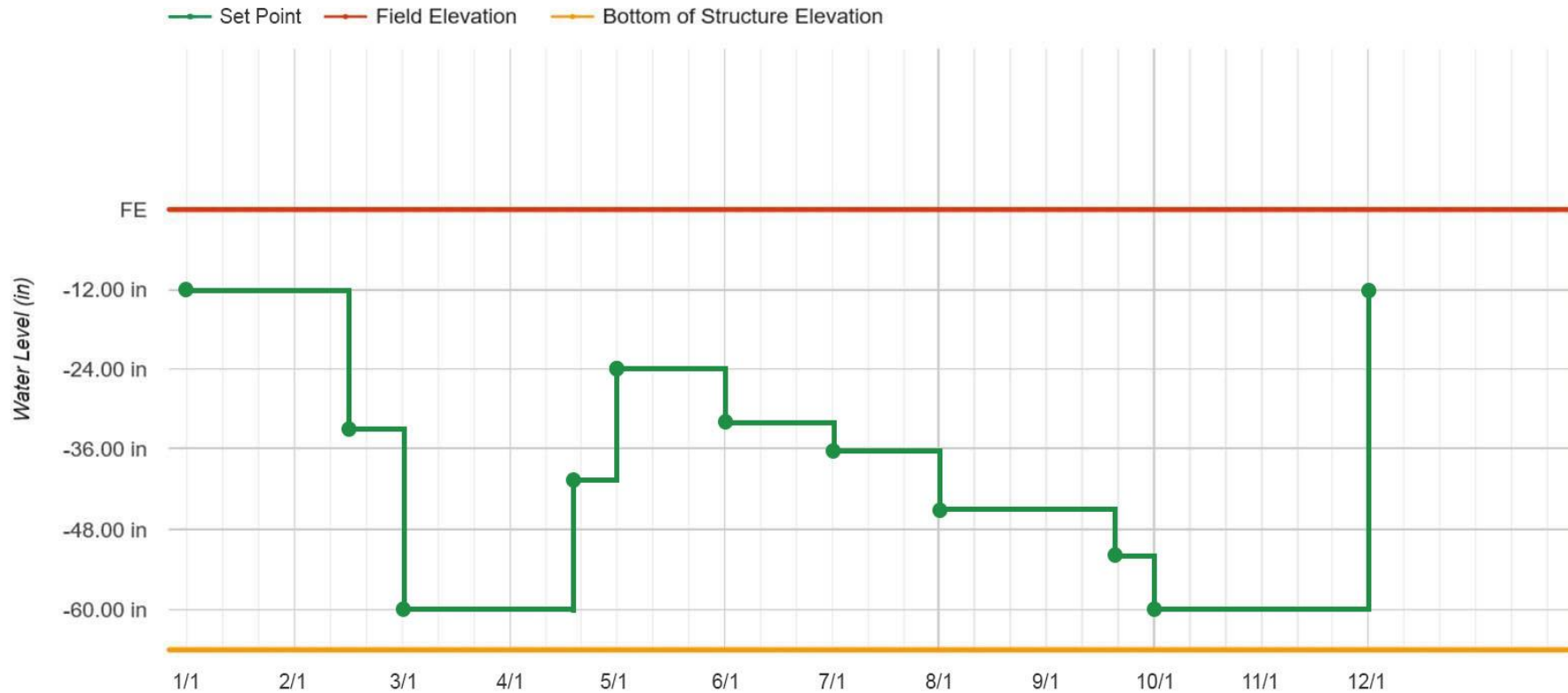


Chart Options

Site

Lower Field, RSG154... ▾

Chart

× Water Level

Range

Custom ▾

Start Date

01/01/2019

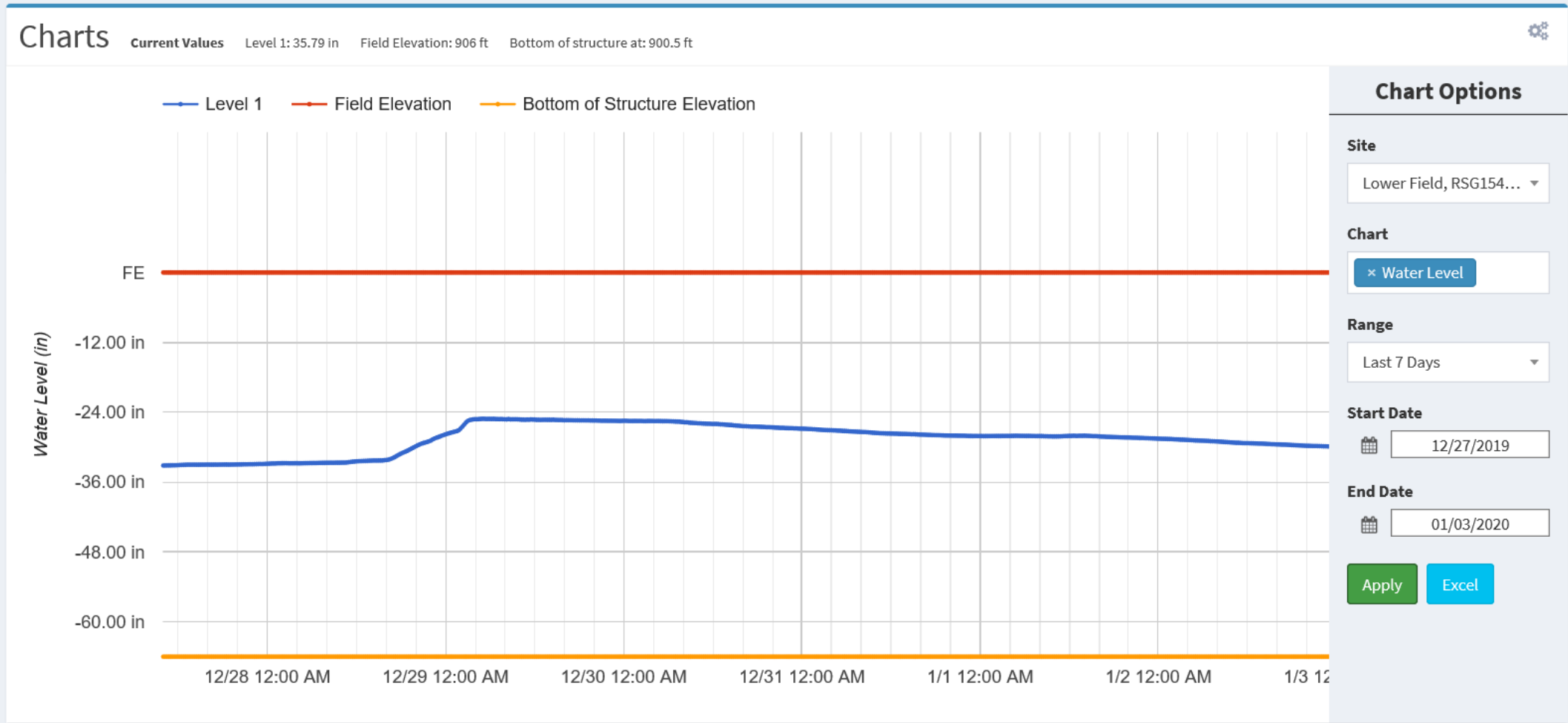
End Date

12/31/2019

Apply

Excel

Charts



Charts

Charts

Current Values

Temperature: 85.82 °F

Field Elevation: 906 ft

Bottom of structure at: 900 ft

Temperature: 85.82 °F

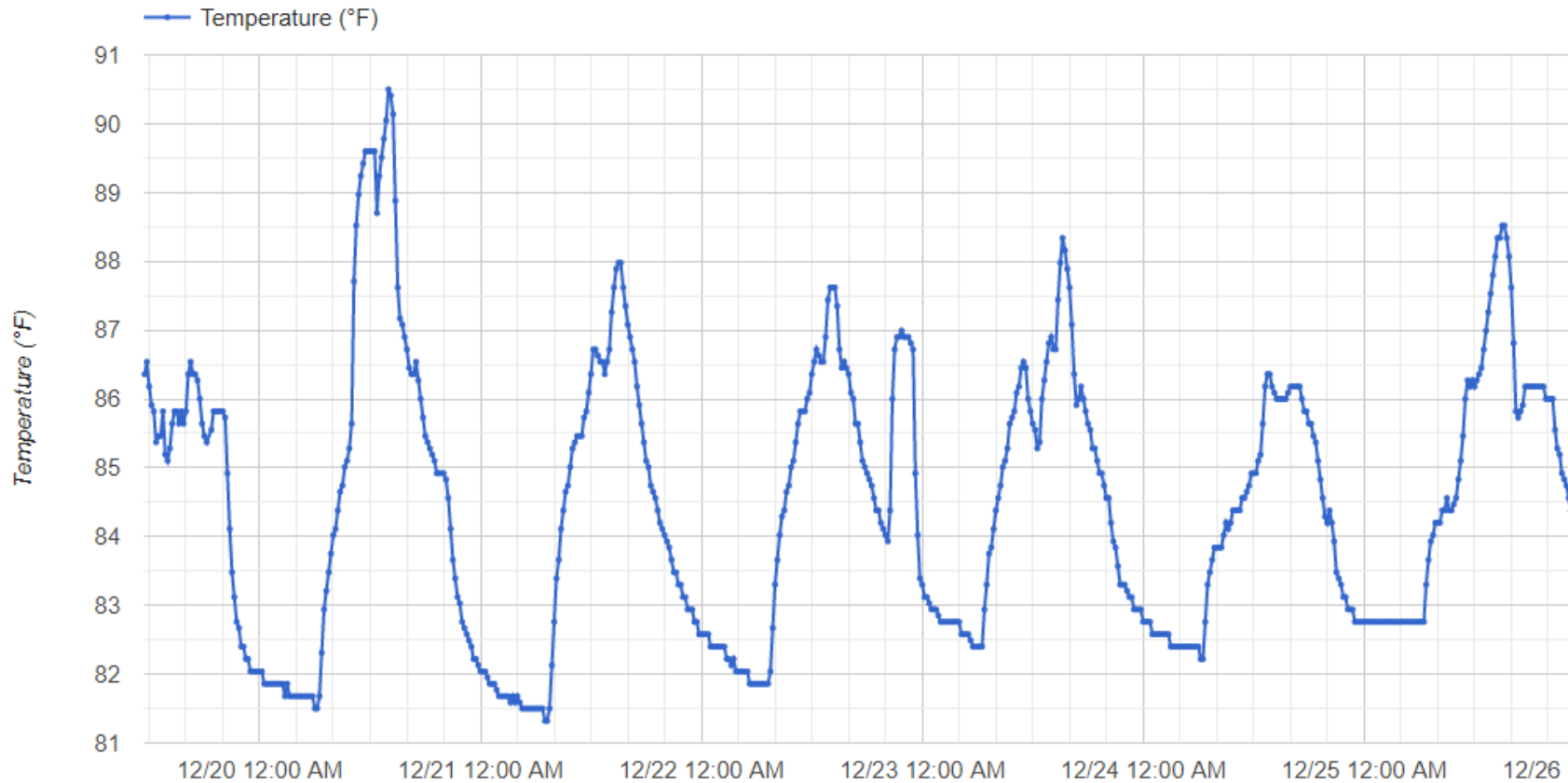


Chart Options

Site

Lower Field, RSG1548

Chart

× Temperature

Range

Last 7 Days

Start Date

12/19/2019

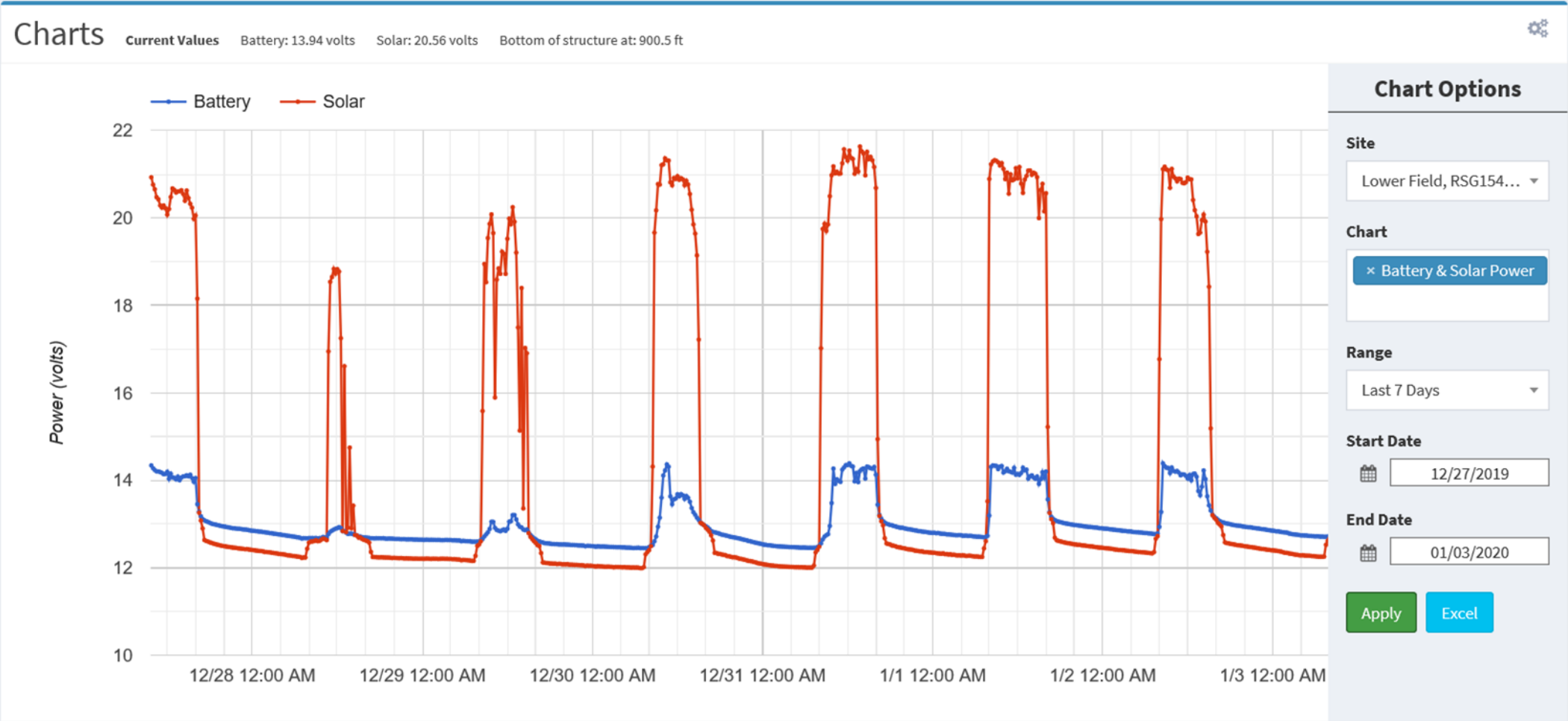
End Date

12/26/2019

Apply

Excel

Charts



Site Map

