

Inline Water Level Control Structure™

- Rugged 1/2" PVC structure.
- Heavy Steel lockable top.
- Stainless steel screws and custom anodized aluminum corner extrusions are used for strength and durability.
- 5" & 7" stoplogs for adjustability.
- Flexible couplers allow PVC, plastic pipe, or other materials to be easily attached. (Please specify type of pipe when ordering)
- 5-Year Warranty on all parts
- Please allow up to 2 weeks for shipment.



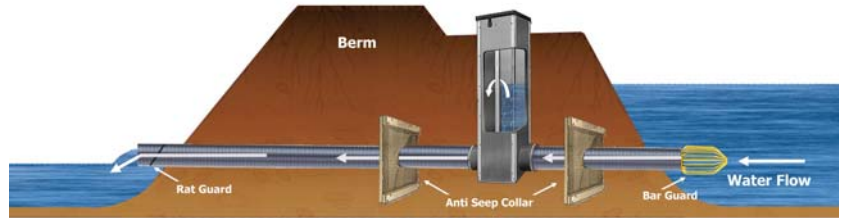
Durable stainless steel lifting hooks.



Comes with a handle to install and remove stoplogs.

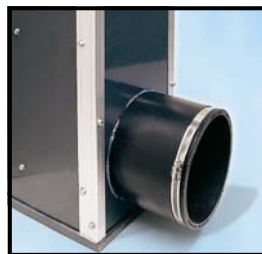
Inline Water Level Control Structure			
Pipe Size	Available Heights	Width	Depth
4"	2' - 12'	8"	10"
6"	2' - 12'	8"	10"
8"	2' - 12'	12"	12"
10"	2' - 12'	14"	16"
12"	2' - 12'	16"	20"
15"	2' - 12'	20"	24"
18"	2' - 12'	24"	28"
24"	3' - 10'	31"	39"

TYPICAL INSTALLATION
Inline Water Level Control Structure



Inlet Water Level Control Structure™

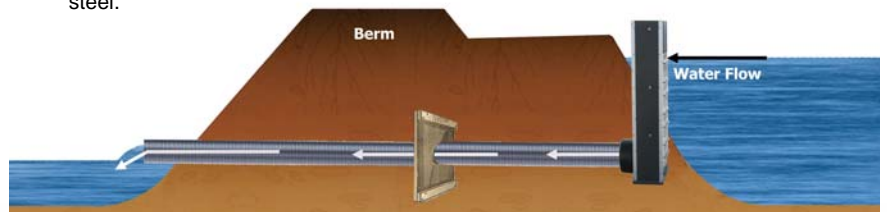
- Rugged 1/2" PVC structure.
- Stainless steel screws and custom anodized aluminum corner extrusions are used for strength and durability.
- 5" & 7" stoplogs for adjustability.
- Flexible couplers allow PVC, plastic pipe, or other materials to be easily attached. (Please specify type of pipe when ordering)
- 5-Year Warranty on all parts
- Please allow up to 2 weeks for shipment.



Aluminum extruded corners with stainless steel.

Inlet Water Level Control Structure			
Pipe Size	Available Heights	Width	Depth
4"	2' - 6'	8"	5"
6"	2' - 6'	8"	5"
8"	2' - 6'	12"	6"
10"	2' - 6'	14"	8"
12"	2' - 6'	16"	10"
15"	2' - 6'	20"	12"
18"	2' - 6'	24"	14"
24"	2' - 6'	31"	18"

TYPICAL INSTALLATION
Inlet Water Level Control Structure



Manufactured by:

Agri Drain
CORPORATION

P.O. Box 458 • 1462 340th Street • Adair, Iowa 50002
Phone: 1-800-232-4742 • Fax: 1-800-282-3353
www.agridrain.com • email: info@agridrain.com

Water Level Control Structures

The **Water Level Control Structures** manufactured by *Agri Drain Corp.* are constructed of 1/2" thick extruded PVC sheets, connected at the corners by means of specially extruded anodized aluminum profiles sealed with waterproof caulking and secured with stainless steel screws. The bottom of the structure is sealed with 1/2" thick PVC sheet and also utilizes waterproof caulking for sealant and stainless steel screws to hold it in place.

The stoplogs are also constructed of 1/2" thick PVC sheet and utilizes 3/16" diameter closed cell foam neoprene o-ring, glued into a groove to mate against the downstream surface of the extruded aluminum track and the top of the stoplog that it rests upon. The stoplogs are equipped with two stainless steel hooks to facilitate their removal by means of a special handle/hook assembly.

In order to obtain inch-by-inch water level adjustment capabilities, the stoplogs are built in equal quantity of two heights, 5" and 7" tall. This allows for various combinations and nearly infinite adjustability. Examples: 7+7=14", 5+5+5=15", 5+5+7=17", 5+7+7=19", 5+5+5+5=20", etc.

The means of connecting to the downstream and upstream pipe is a flexible rubber sewer coupler. It will accommodate corrugated plastic tubing, PVC pipe, corrugated metal pipe or virtually any other conduit material.

The units are available in two different types. The first type (Inlet) is designed to be installed on the upstream end of the conduit so the water must enter the structure before it enters the pipe. The second type (Inline) is designed to be installed in the pipe line, so the water enters the pipe, then flows into the box, over the stoplogs, then out the downstream side of the structure. The structure is equipped with a metal lid and brackets for attachment. Both structures come with a handle to remove, install or adjust the stoplogs.

The structures are manufactured in various sizes based on diameter of the conduit and engineered to provide a minimum of 30% greater capacity than the conduit it is connected to. It is available in heights to suit the specific installation.

INLINE WATER LEVEL CONTROL STRUCTURE SHIPPING WEIGHTS								
Pipe Size	HEIGHT							
	2'	3'	4'	5'	6'	8'	10'	12'
4"	50U	64U	82U	90U	100U	190T	214T	278T
6"	52U	70U	90U	103U	160T	200T	240T	320T
8"	64U	87U	110U	175T	200T	240T	300T	
10"	78U	110U	176T	195T	224T	300T	345T	436T
12"	94U	172T	210T	250T	314T	396T	450T	
15"		222T	278T	316T	387T	492T	560T	626T
18"		236T	376T	422T	480T	586T	710T	816T
24"		369T	500T	607T	680T	830T	950T	1180T

UPS=U
TRUCK LINE=T

Inlet Boards - 1/8" off width
Inline Boards - 1 1/4" off width

Larger CMP structures also available. Call for details on custom sizes and pricing.

INLET WATER LEVEL CONTROL STRUCTURE SHIPPING WEIGHTS					
Pipe Size	HEIGHT				
	2'	3'	4'	5'	6'
4"	26U	38U	51U	64U	83U
6"	35U	41U	52U	67U	75T
8"	37U	51U	67U	82T	134T
10"	49U	62U	85U	122T	136T
12"	55U	72T	96U	145T	172T
15"	82U	95T	139T	185T	210T
18"	128T	178T	190T	232T	250T
24"	178T		268T	288T	352T

Manufactured by:

Agri Drain
CORPORATION

P.O. Box 458 • 1462 340th Street • Adair, Iowa 50002
Phone: 1-800-232-4742 • Fax: 1-800-282-3353
www.agridrain.com • email: info@agridrain.com