

Water Level Control Structures

The **Water Level Control Structures** manufactured by *Agri Drain Corp.* are constructed of rugged $\frac{1}{2}$ "-thick PVC sheets, connected at the corners by means of specially extruded anodized aluminum profiles sealed with waterproof caulking and secured with stainless steel screws.* The bottom of the structure is sealed with either a $\frac{1}{2}$ "- or 1"-thick PVC sheet (dependent upon structure size) and also utilizes waterproof caulking for sealant and stainless steel screws to hold it in place. *For water that is caustic, acid, corrosive, salt, or pH below 5 pH or above 9 pH, please notify us of your requirements to ensure structures are built with compatible hardware. For these applications, Agri Drain recommends stainless steel.

The stoplogs* are constructed of PVC and utilize a seal that mates against the downstream surface of the extruded aluminum track and the top of the stoplog that it rests upon. The stoplogs are equipped with hooks to facilitate their removal by means of a special handle/hook assembly. ***Important!** To minimize seepage, align stoplogs firmly against one side of the stoplog track.

In order to obtain inch-by-inch water level adjustment capabilities, the stoplogs are built in equal quantity of two heights: 5" and 7" tall. This allows for various combinations and nearly infinite adjustability. Note: One 7"-tall stoplog is specified with a sticker stating "Bottom Board" and this stoplog must be placed at the bottom. Examples: 7"+7"=14", 5"+5"+5"=15", 5"+5"+7"=17", 5"+7"+7"=19", 5"+5"+5"+5"=20", etc.

The means of connecting to the downstream and upstream pipe is a flexible rubber sewer coupler. It will accommodate corrugated plastic tubing, PVC pipe, corrugated metal pipe, or virtually any other conduit material.

The units are available in two different types. The first type (Inlet) is designed to be installed on the upstream end of the conduit so the water must enter the structure before it enters the pipe. The Inlet must be anchored down when installed or it may have the tendency to float. The second type (Inline) is designed to be installed in the pipe line, so the water enters the pipe, then flows into the box, over the stoplogs, then out the downstream side of the structure. The Inline structure is equipped with a lockable plastic lid and is available in manual or automated. Both structures come with a handle to remove, install, or adjust the stoplogs.

The structures are manufactured in various sizes based on diameter of the conduit and engineered to provide a minimum of 30% greater capacity than the conduit it is connected to. They are available in heights to suit the specific installation.

Call today!
1-800-232-4742

**For a complete product catalog
or for more information on these
or any of our other quality
products or services, call today.**

Structures, Valves, & Gates • Pipe & Accessories
Surface Inlets • Equipment & Tools
Survey Equipment • Erosion Control
Pond & Lake Management
Safety & Misc. Equipment



Agri Drain
CORPORATION

1462 340th Street, Adair, IA 50002
Ph: 800-232-4742 or 641-742-5211
Fax: 800-282-3353 or 641-742-5222
Visit our website: www.agridrain.com
Email: info@agridrain.com



**Products for
drainage water
management,
sub-irrigation,
wetlands,
ponds, lakes,
erosion control,
and land
improvement.**

Why just drain it, when you can manage it!

Water Level Control Structure Types: Inline & Inlet

Managing your water is EASY when using Agri Drain Water Level Control Structures!

The Inline Water Level Control Structure™ is designed to be installed in the pipe line, so the water enters the pipe, then flows into the box, over the stoplogs, then out the downstream side of the structure. The Inline structure is equipped with a lockable plastic lid and is available in manual or automated.

The Inlet Water Level Control Structure™ is designed to be installed on the upstream end of the conduit so the water must enter the structure before it enters the pipe.

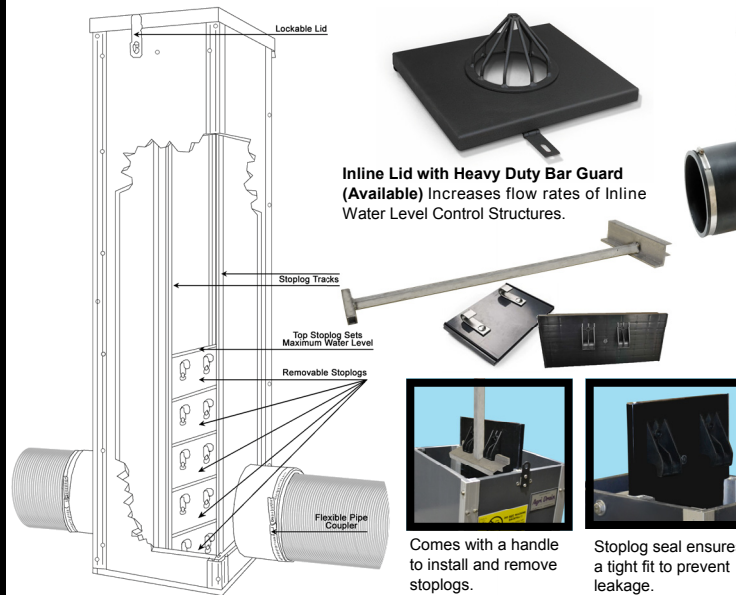
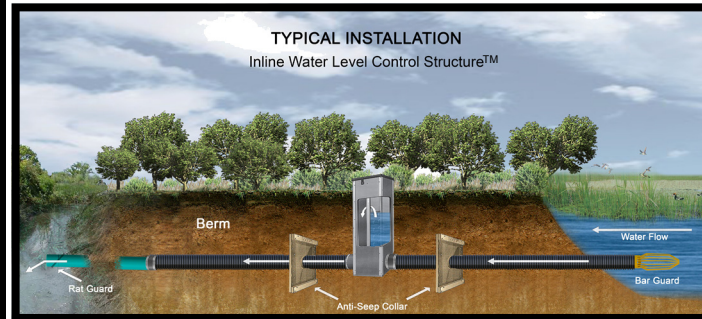
Both structures come with a handle to remove, install, or adjust the stoplogs.

Features

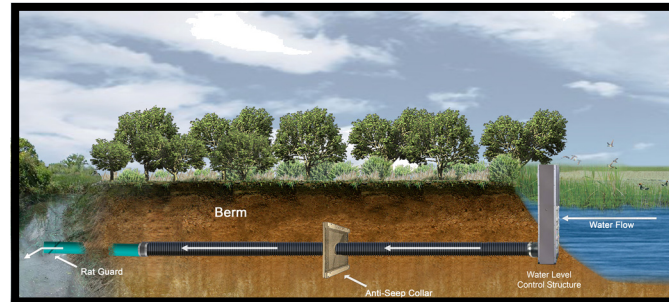
- Constructed of rugged 1/2" PVC with lockable plastic lid. (No lid on Inlet structures.)
- Stainless steel screws and custom anodized aluminum corner extrusions are used for strength and durability.*
- Flexible couplers allow PVC, plastic pipe, or other materials to be easily attached. *(Please specify type of pipe when ordering.)*
- Stoplogs made of PVC in 5" & 7" heights for adjustability. (Maintenance recommended: Remove stoplogs and grease seal with white lithium grease. Ensure there is no debris in the tracks or along the bottom of the structure. Replace stoplogs after greasing.)
- **Important!** To minimize seepage, align stoplogs firmly against one side of the stoplog track.
- Stoplogs must remain in track during structure installation.
- Structures are not pressure rated.
- Structures are intended for gravity flow: Low pressure and some seepage may occur.
- Available in 4" to 24" diameter pipe.
- Inline available in manual or automated in 2', 3', 4', 5', 6', 8', 10', and 12' heights.
- Inlet available in 2', 3', 4', 5', and 6' heights.
- Larger CMP structures available.
- 5-year warranty on all standard structures.
- Customized or special orders will carry a 1-year warranty on workmanship and material and are nonreturnable.

**For water that is caustic, acid, corrosive, salt, or pH below 5 pH or above 9 pH, please notify us of your requirements to ensure structures are built with compatible hardware. For these applications, Agri Drain recommends stainless steel.*

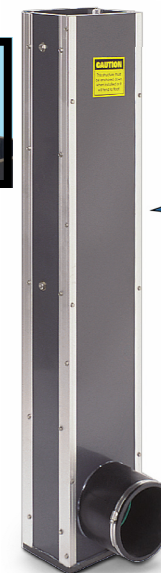
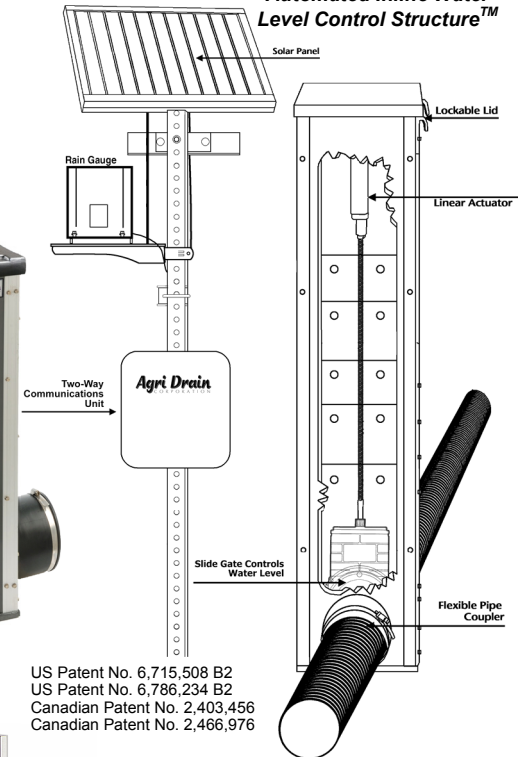
Manual or Automated Inline Water Level Control Structure™



Inlet Water Level Control Structure™

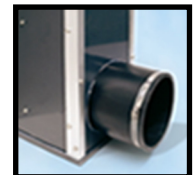


Automated Inline Water Level Control Structure™



Flexible rubber connectors with heavy-duty stainless steel clamps.

Aluminum extruded corners with stainless steel screws.



Call today! 1-800-232-4742

Visit our website! www.agridrain.com